

A. GENERAL NOTES:

1. ALL DIMENSION ARE IN MM UNLESS OR OTHERWISE SPECIFIED.
2. ALL EXTERNAL PLASTER ARE IN 18 MM TH AND INTERNAL PLASTER ARE 12 MM TH.
3. ALL EXTERNAL WALL'S ARE 200 MM TH AND INTERNAL WALL'S ARE 100 MM TH OR OTHERWISE MENTIONED.
4. ALL ELECTRICAL AND PLUMBING WORKS ARE CONSIDERED AS PER I.S. CODE.

B. STRUCTURAL NOTE:

1. ALL DIMENSION ARE IN MM UNLESS OR OTHERWISE SPECIFIED.
2. DIMENSION TO READ ONLY, NOT TO BE SCALED.
3. THIS DRAWING SHALL BE READ IN CONJUNCTION WITH RELEVANT ARCHITECTURAL DRGS.
4. FOR LOCATION OF THE BUILDING REFER ARCH. BLOCK LAYOUT PLAN.
5. F.G.L SHALL BE FIXED AT SITE AS PER SITE DECISION AND SHALL BE CONSIDERED AS (+)-0.00M.
6. BEARING CAPACITY OF SOIL = CONSIDERED AS 8.0 MT/M².
7. GRADE OF
 - a) CONCRETE = M-25, DESIGN MIX (U.O.M)
 - b) STEEL = F4500.
 - c) CEMENT = EQUIVALENT TO 53.
8. CLEAR COVER TO REINF
 - a) FOUNDATION AND FOUNDATION BEAM=50MM
 - b) COLUMN=40 MM
 - c) TIE BEAM=30 MM
 - d) STAIR=25 MM
 - e) SLAB TOP AND BOTTOM=20MM AND END=25MM
 - f) FLOOR BEAM=25 MM
9. ANTI TERMITE TREATMENT SHALL BE DONE AS PER RELEVANT I.S. CODES.
10. 50 TH D.P.C (1:2), WITH WATER PROOFING ADMIXTURE SHALL BE PROVIDED AT PLINTH LEVEL OVER ALL BRICK WORK BELOW PLINTH LEVEL.
11. CHAIR SHALL BE PROVIDED BETWEEN TWO LAYERS OF SLAB REINFORCEMENT WHEREVER REQUIRED.
12. SPACE BAR OF SUITABLE DIA SHALL BE PROVIDED BETWEEN TWO LAYERS OF BEAM REINFORCEMENT WHEREVER REQUIRED.
13. ALL CONCRETE SHALL BE MIXED BY MIXER M/C AND SHALL BE COMPACTED BY MECHANICAL VIBRATOR.
14. ANY DISCREPANCY OF THE CONSULTANT PRIOR TO EXECUTION.
15. FOR ANY OTHER GUIDELINE NOT STATED IN THIS DRAWING RELEVANT I.S. CODED ARE NOT TO BE FOLLOWED.

C. AREA CALCULATION:

1. PLOT AREA - 2 NOS
CV09-178 73 SQM
2. GROUND FLOOR AREA
CV10-179 39 SQM
3. FIRST FLOOR AREA
= 79.72 SQM
4. OPEN TERRACE AREA (100%)
= 46.05 SQM.
5. JULIET BALCONY (100%)
= 15.92 SQM.
6. TOTAL AREA
= 1.85 SQM.
7. HARDCAPE AREA
= 150.07 SQM
8. HEIGHT OF BUILDING
= 20.31 SQM
9. CAR PARKING PROVIDED
= 6.0 MERTER.
= 1 NO.

D. SIGNATURE OF OWNER:

MOTROPE INDIA PVT. LTD.
Enlarged Signatory

E. SIGNATURE OF ENGINEER:

SIGNATURE OF OWNER
SIGNATURE OF ENGINEER

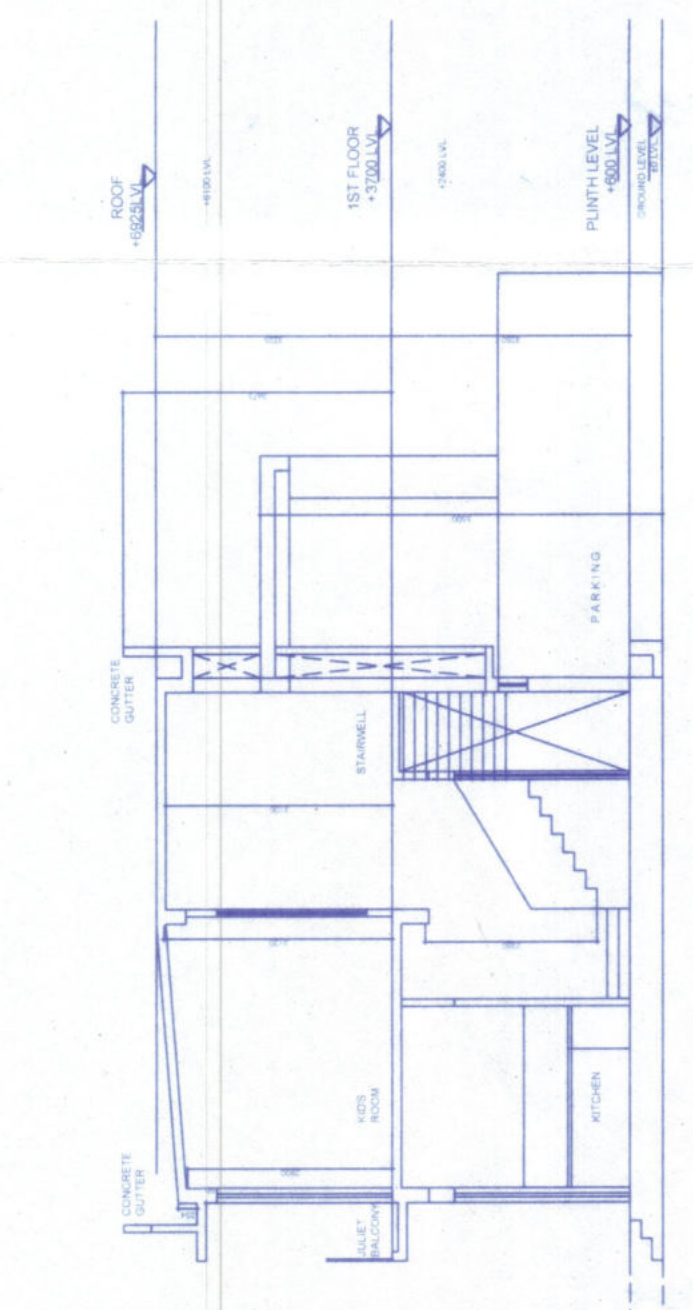
F. PROJECT:

PROPOSED TYPICAL G+1 BUNGALOW FOR RESIDENTIAL COMPLEX AT PLOT NO CV-09&10 DAGNO-1959&1959/2760 MOUZA - RAMKRISHNAPUR, P.S.-BISHNUPUR, DIST - SOUTH 24 P.G.S, WEST BENGAL.

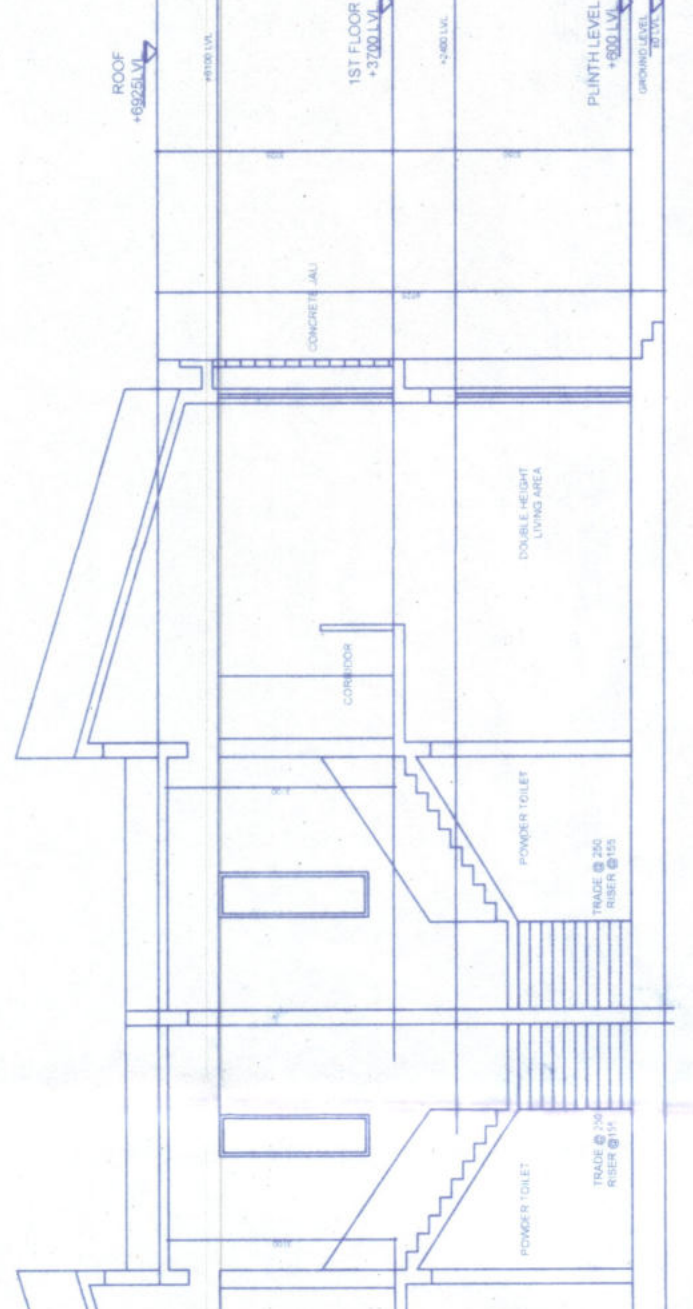
G. SANCTION DRAWING:

SITE PLAN, FLOOR'S PLAN, ROOF PLAN, ELEVATION, SECTION, LOCATION DETAILS OF SEPTIC TANK AND STRUCTURAL DETAILS OF PLOT NO CV-09&10.

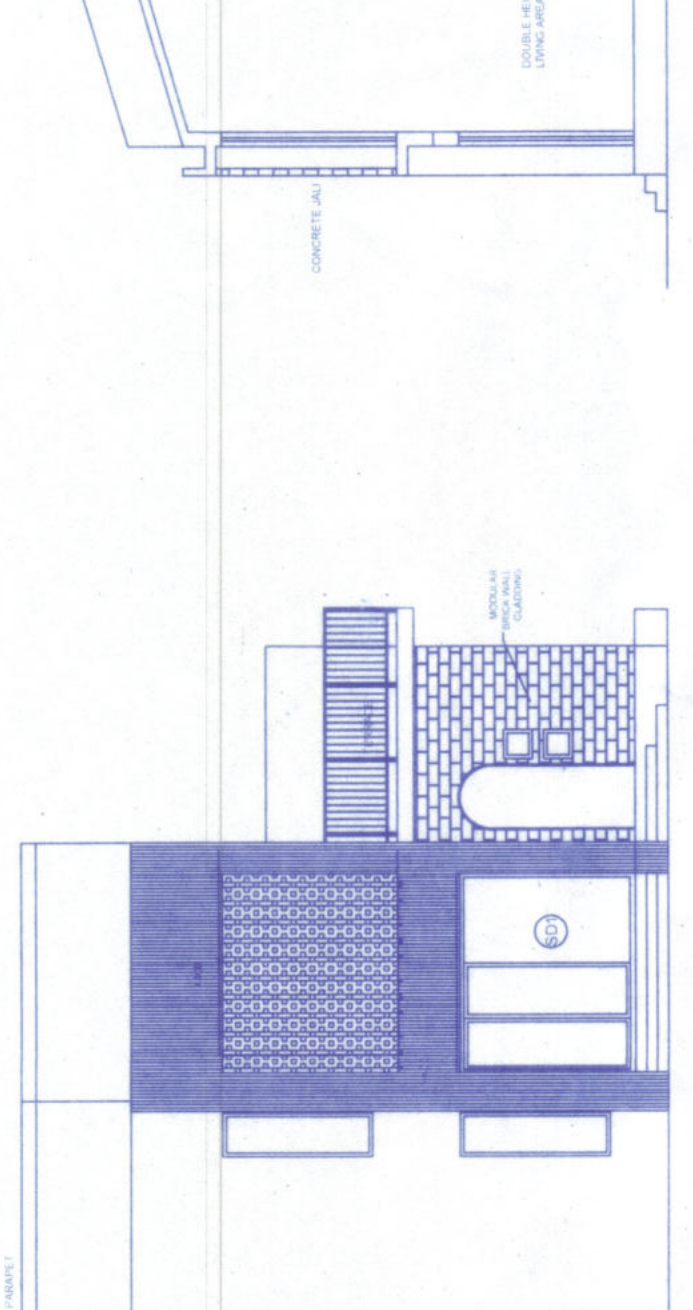
Approved By: *[Signature]*
 Drawing No: DWG/NO.01
 Date: 13/08/2024
 Project Name: Bungalow at Plot No CV-09&10, Dagno-1959&1959/2760, Mouza-Ramkrishnapur, P.S.-Bishnupur, Dist-South 24 P.G.S, West Bengal.



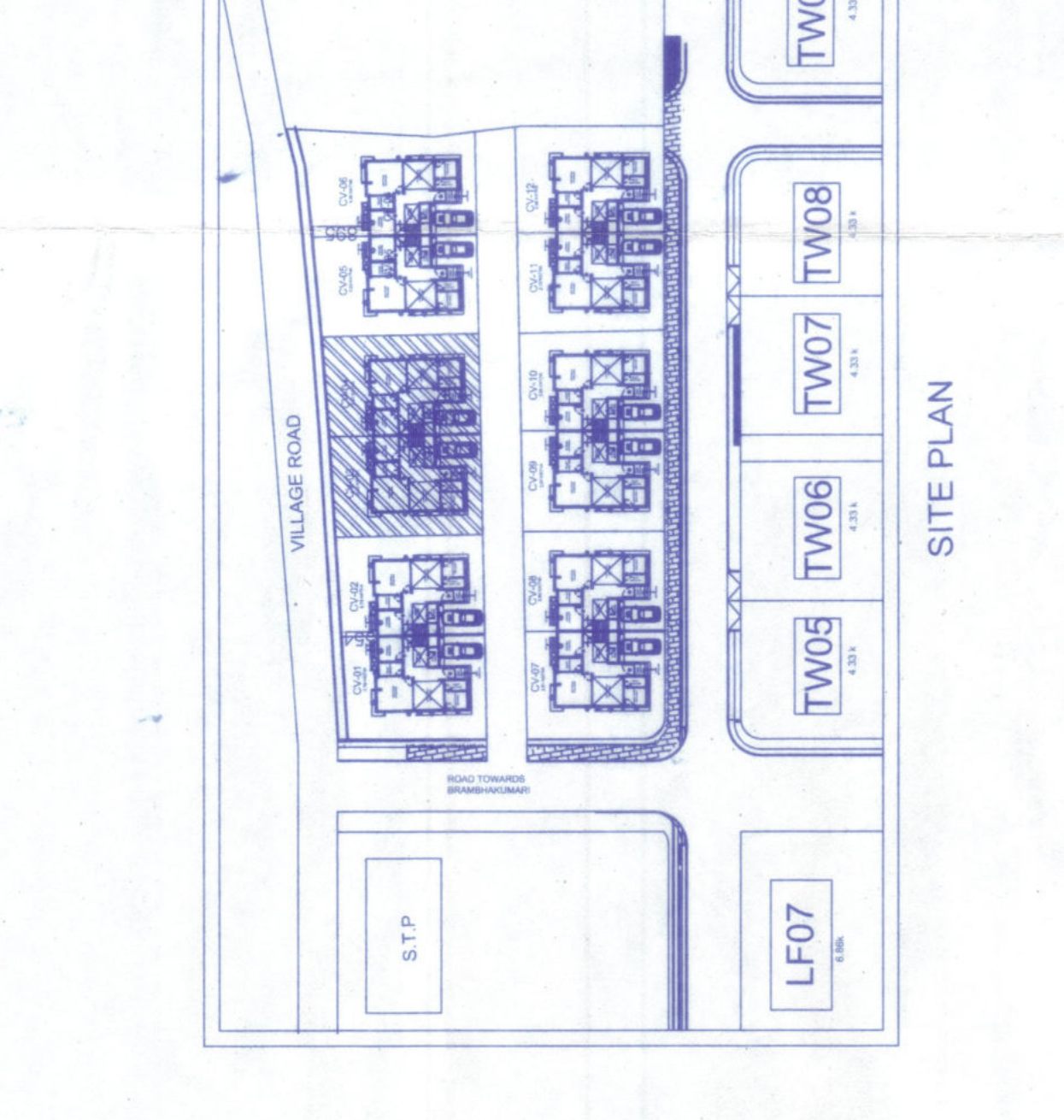
FRONT ELEVATION



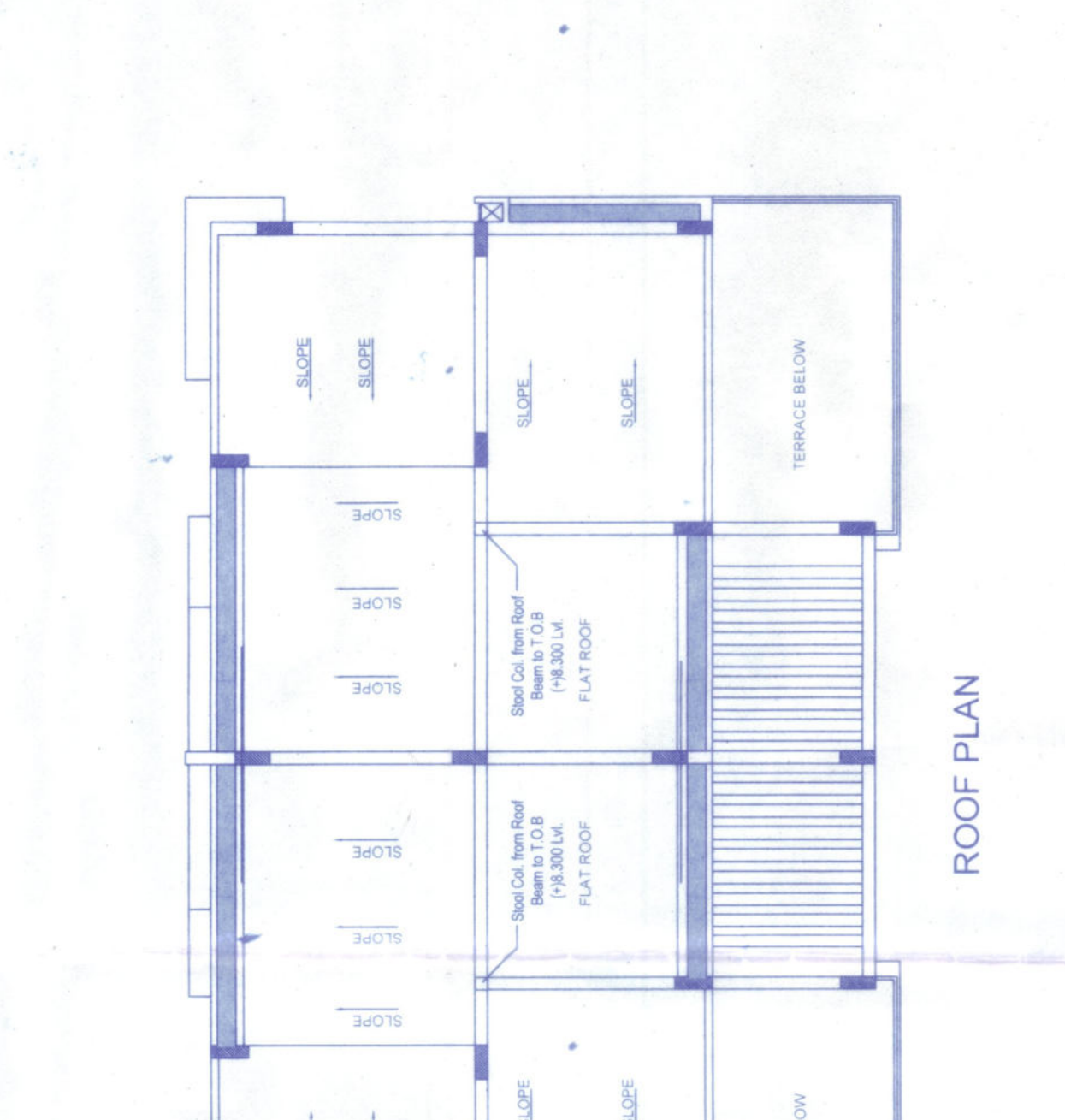
SIDE ELEVATION



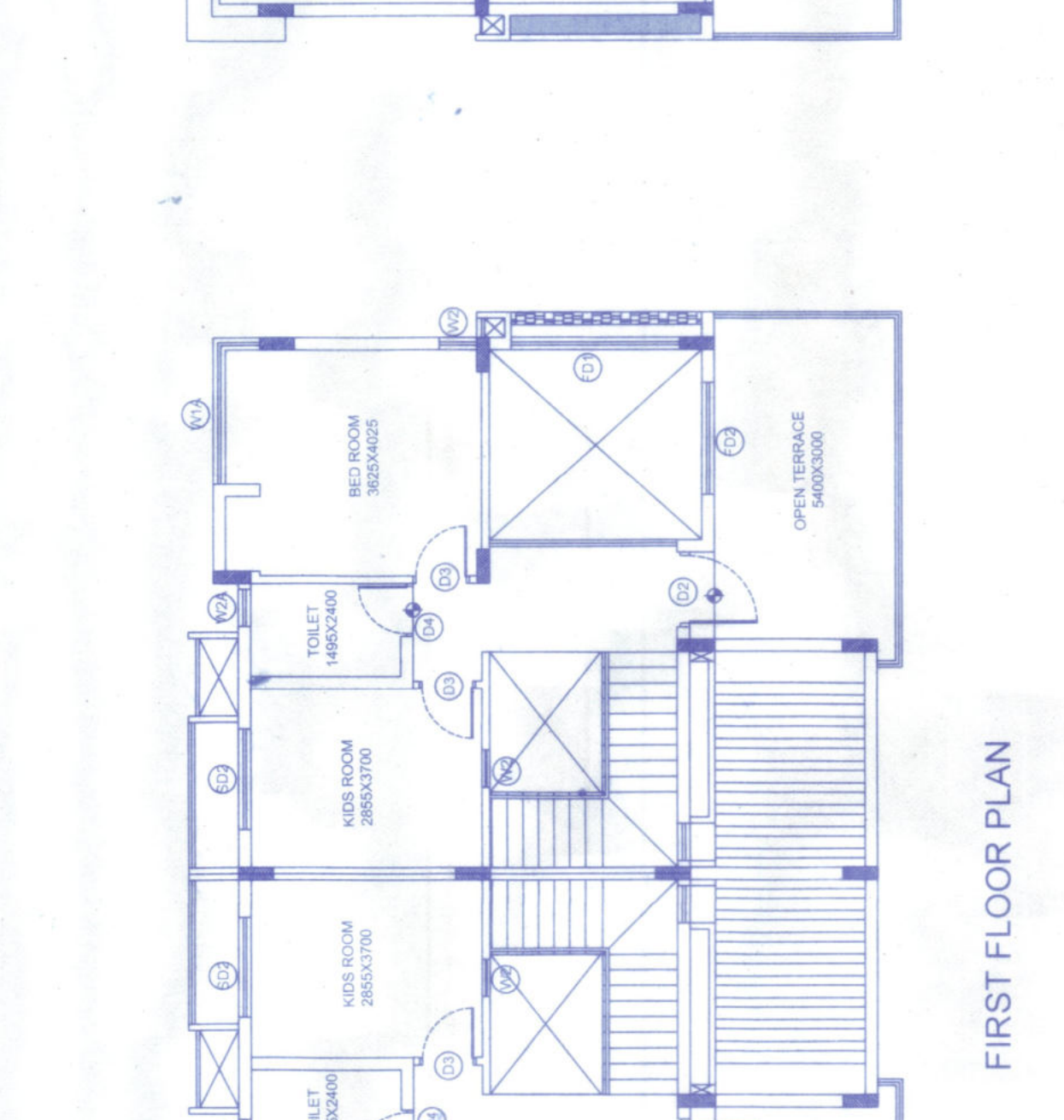
ROOF PLAN



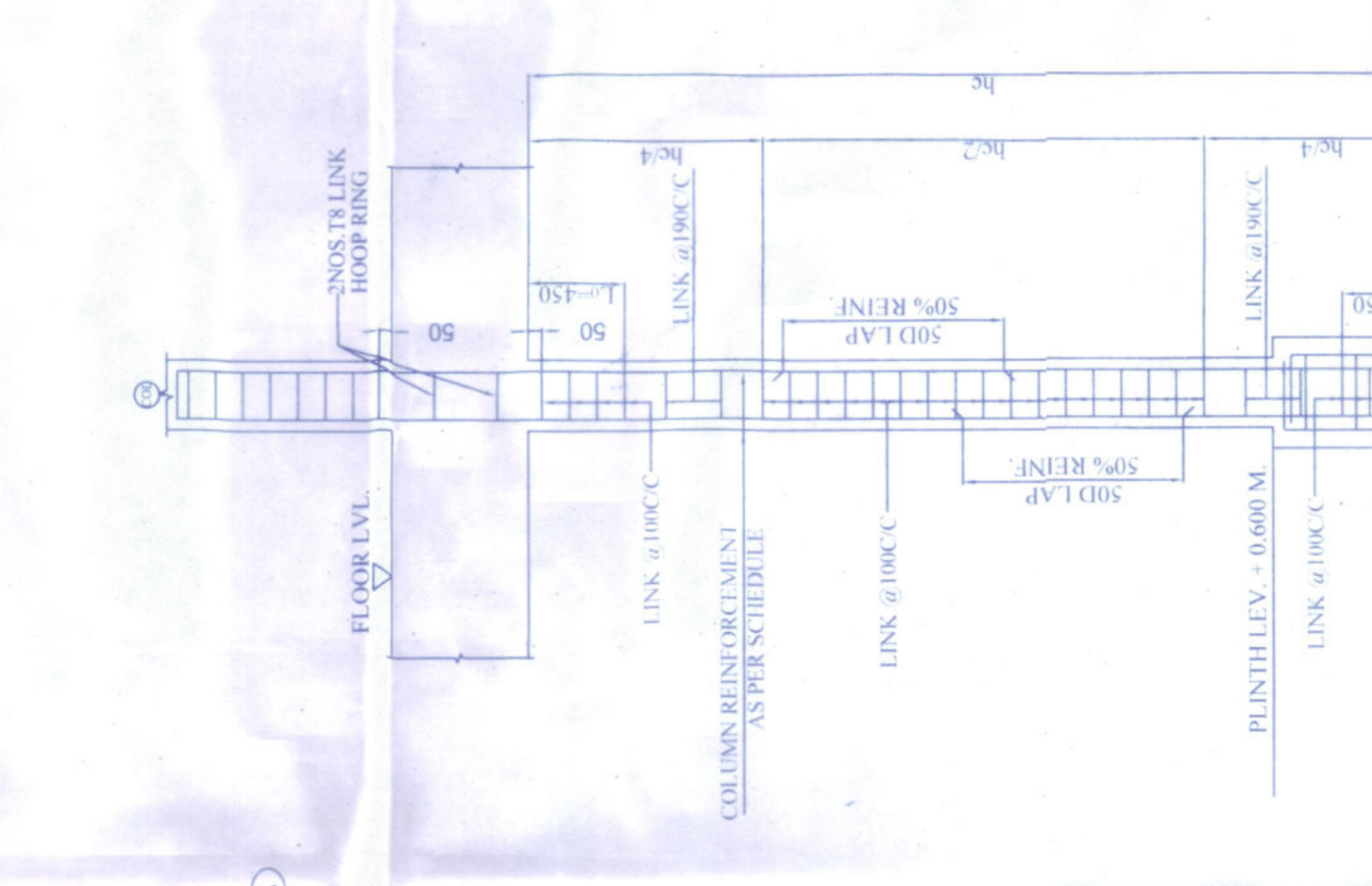
GROUND FLOOR PLAN



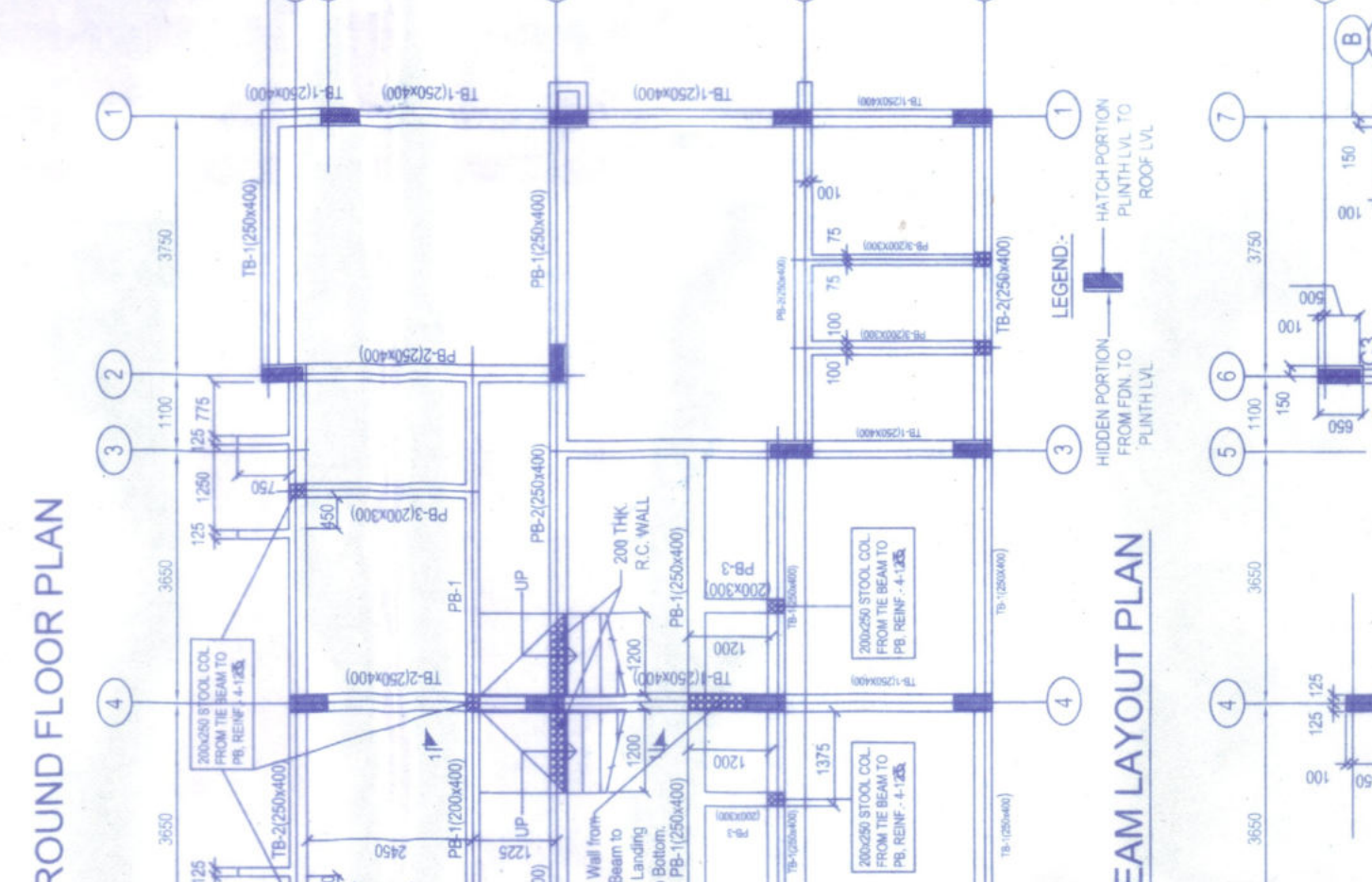
FIRST FLOOR PLAN



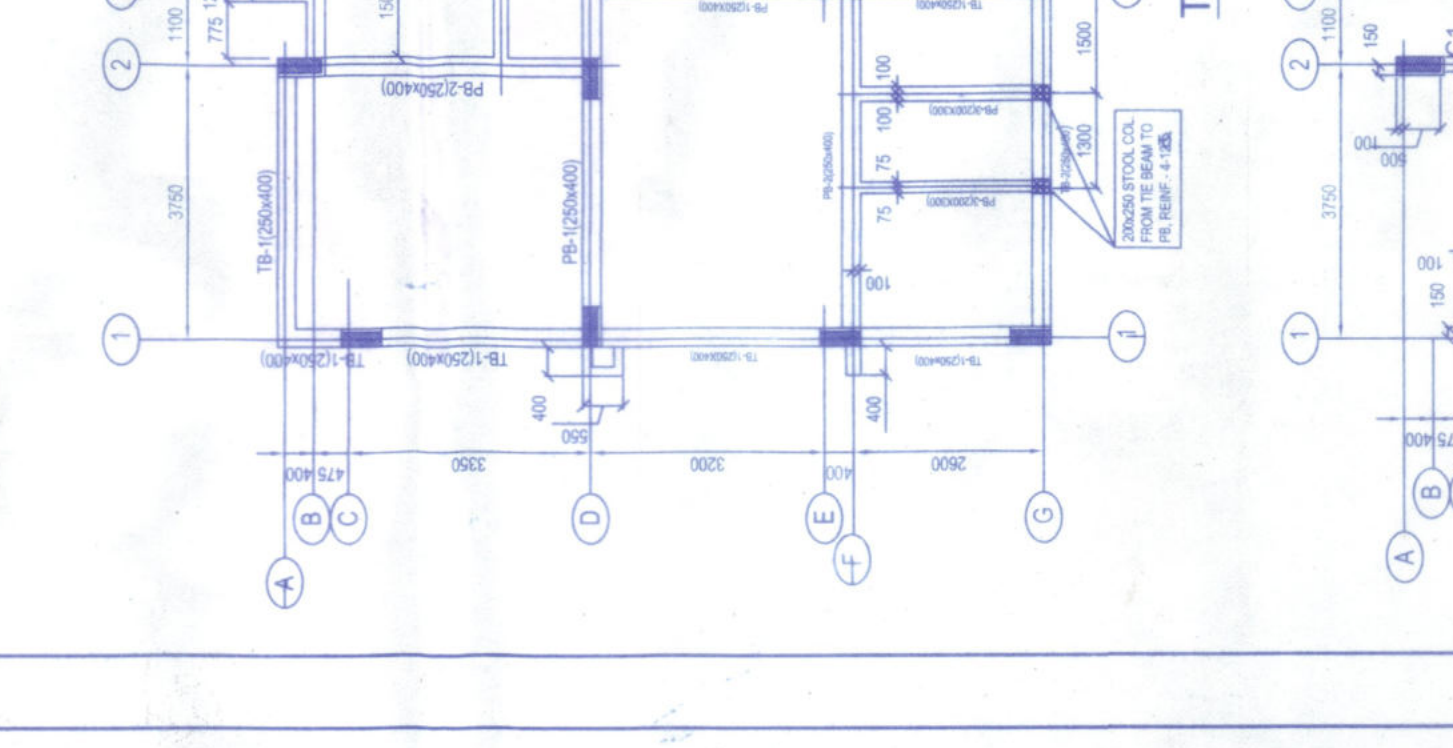
TYPICAL R.C.C. DETAIL OF FLOOR BEAM AT FIRST FLOOR LEVEL AND ROOF LEVEL



TYPICAL R.C.C. DETAIL OF TIE BEAM MKD, TB1, TB2



TYP. LONGITUDINAL SECTION OF COLUMN



TIE BEAM LAYOUT PLAN

SCHEDULE OF COLUMN

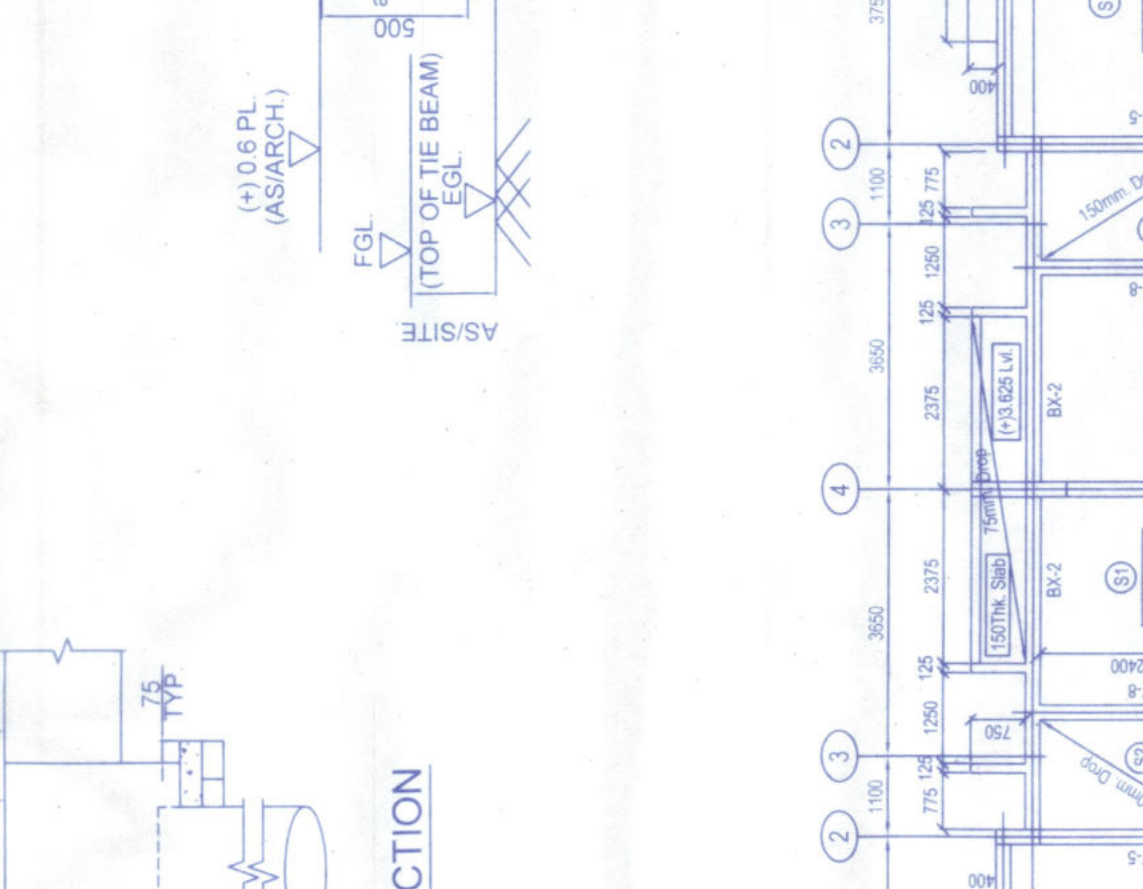
COL. NO.	SIZE (mm)	REIN. AT SUPPORT	REIN. AT SPAN	REMARKS
CO-1	300x300	4-16 @ 150	4-16 @ 150	FLOOR BEAM
CO-2	300x300	4-16 @ 150	4-16 @ 150	FLOOR BEAM
CO-3	300x300	4-16 @ 150	4-16 @ 150	FLOOR BEAM
CO-4	300x300	4-16 @ 150	4-16 @ 150	FLOOR BEAM
CO-5	300x300	4-16 @ 150	4-16 @ 150	FLOOR BEAM
CO-6	300x300	4-16 @ 150	4-16 @ 150	FLOOR BEAM
CO-7	300x300	4-16 @ 150	4-16 @ 150	FLOOR BEAM
CO-8	300x300	4-16 @ 150	4-16 @ 150	FLOOR BEAM
CO-9	300x300	4-16 @ 150	4-16 @ 150	FLOOR BEAM
CO-10	300x300	4-16 @ 150	4-16 @ 150	FLOOR BEAM
CO-11	300x300	4-16 @ 150	4-16 @ 150	FLOOR BEAM
CO-12	300x300	4-16 @ 150	4-16 @ 150	FLOOR BEAM
CO-13	300x300	4-16 @ 150	4-16 @ 150	FLOOR BEAM
CO-14	300x300	4-16 @ 150	4-16 @ 150	FLOOR BEAM
CO-15	300x300	4-16 @ 150	4-16 @ 150	FLOOR BEAM
CO-16	300x300	4-16 @ 150	4-16 @ 150	FLOOR BEAM
CO-17	300x300	4-16 @ 150	4-16 @ 150	FLOOR BEAM
CO-18	300x300	4-16 @ 150	4-16 @ 150	FLOOR BEAM
CO-19	300x300	4-16 @ 150	4-16 @ 150	FLOOR BEAM
CO-20	300x300	4-16 @ 150	4-16 @ 150	FLOOR BEAM
CO-21	300x300	4-16 @ 150	4-16 @ 150	FLOOR BEAM
CO-22	300x300	4-16 @ 150	4-16 @ 150	FLOOR BEAM
CO-23	300x300	4-16 @ 150	4-16 @ 150	FLOOR BEAM
CO-24	300x300	4-16 @ 150	4-16 @ 150	FLOOR BEAM
CO-25	300x300	4-16 @ 150	4-16 @ 150	FLOOR BEAM
CO-26	300x300	4-16 @ 150	4-16 @ 150	FLOOR BEAM
CO-27	300x300	4-16 @ 150	4-16 @ 150	FLOOR BEAM
CO-28	300x300	4-16 @ 150	4-16 @ 150	FLOOR BEAM
CO-29	300x300	4-16 @ 150	4-16 @ 150	FLOOR BEAM
CO-30	300x300	4-16 @ 150	4-16 @ 150	FLOOR BEAM
CO-31	300x300	4-16 @ 150	4-16 @ 150	FLOOR BEAM
CO-32	300x300	4-16 @ 150	4-16 @ 150	FLOOR BEAM
CO-33	300x300	4-16 @ 150	4-16 @ 150	FLOOR BEAM
CO-34	300x300	4-16 @ 150	4-16 @ 150	FLOOR BEAM
CO-35	300x300	4-16 @ 150	4-16 @ 150	FLOOR BEAM
CO-36	300x300	4-16 @ 150	4-16 @ 150	FLOOR BEAM
CO-37	300x300	4-16 @ 150	4-16 @ 150	FLOOR BEAM
CO-38	300x300	4-16 @ 150	4-16 @ 150	FLOOR BEAM
CO-39	300x300	4-16 @ 150	4-16 @ 150	FLOOR BEAM
CO-40	300x300	4-16 @ 150	4-16 @ 150	FLOOR BEAM

SCHEDULE OF BEAM

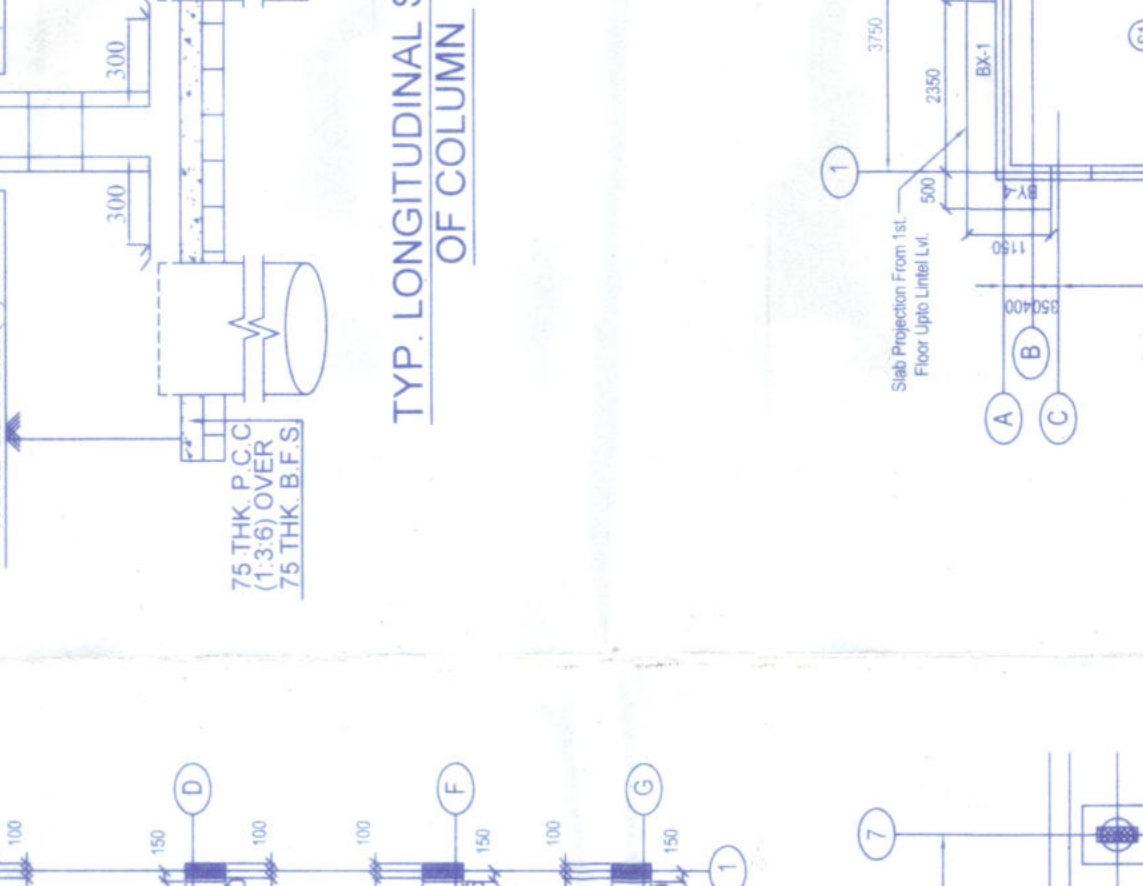
BEAM NO.	COL. SIZE	REIN. AT SUPPORT	REIN. AT SPAN	REMARKS
BK-1 (BY 2-8@150)	300x600	4-16 @ 150	4-16 @ 150	FLOOR BEAM
BK-2 (BY 2-8@150)	300x600	4-16 @ 150	4-16 @ 150	FLOOR BEAM
BK-3	300x600	4-16 @ 150	4-16 @ 150	FLOOR BEAM
BK-4	300x600	4-16 @ 150	4-16 @ 150	FLOOR BEAM
BK-5 (BY 2-8@150)	300x600	4-16 @ 150	4-16 @ 150	FLOOR BEAM
BK-6 (BY 2-8@150)	300x600	4-16 @ 150	4-16 @ 150	FLOOR BEAM
BK-7 (BY 2-8@150)	300x600	4-16 @ 150	4-16 @ 150	FLOOR BEAM
BK-8 (BY 2-8@150)	300x600	4-16 @ 150	4-16 @ 150	FLOOR BEAM
BK-9 (BY 2-8@150)	300x600	4-16 @ 150	4-16 @ 150	FLOOR BEAM
BK-10 (BY 2-8@150)	300x600	4-16 @ 150	4-16 @ 150	FLOOR BEAM
BK-11 (BY 2-8@150)	300x600	4-16 @ 150	4-16 @ 150	FLOOR BEAM
BK-12 (BY 2-8@150)	300x600	4-16 @ 150	4-16 @ 150	FLOOR BEAM
BK-13 (BY 2-8@150)	300x600	4-16 @ 150	4-16 @ 150	FLOOR BEAM
BK-14 (BY 2-8@150)	300x600	4-16 @ 150	4-16 @ 150	FLOOR BEAM
BK-15 (BY 2-8@150)	300x600	4-16 @ 150	4-16 @ 150	FLOOR BEAM
BK-16 (BY 2-8@150)	300x600	4-16 @ 150	4-16 @ 150	FLOOR BEAM
BK-17 (BY 2-8@150)	300x600	4-16 @ 150	4-16 @ 150	FLOOR BEAM
BK-18 (BY 2-8@150)	300x600	4-16 @ 150	4-16 @ 150	FLOOR BEAM
BK-19 (BY 2-8@150)	300x600	4-16 @ 150	4-16 @ 150	FLOOR BEAM
BK-20 (BY 2-8@150)	300x600	4-16 @ 150	4-16 @ 150	FLOOR BEAM
BK-21 (BY 2-8@150)	300x600	4-16 @ 150	4-16 @ 150	FLOOR BEAM
BK-22 (BY 2-8@150)	300x600	4-16 @ 150	4-16 @ 150	FLOOR BEAM
BK-23 (BY 2-8@150)	300x600	4-16 @ 150	4-16 @ 150	FLOOR BEAM
BK-24 (BY 2-8@150)	300x600	4-16 @ 150	4-16 @ 150	FLOOR BEAM
BK-25 (BY 2-8@150)	300x600	4-16 @ 150	4-16 @ 150	FLOOR BEAM
BK-26 (BY 2-8@150)	300x600	4-16 @ 150	4-16 @ 150	FLOOR BEAM
BK-27 (BY 2-8@150)	300x600	4-16 @ 150	4-16 @ 150	FLOOR BEAM
BK-28 (BY 2-8@150)	300x600	4-16 @ 150	4-16 @ 150	FLOOR BEAM
BK-29 (BY 2-8@150)	300x600	4-16 @ 150	4-16 @ 150	FLOOR BEAM
BK-30 (BY 2-8@150)	300x600	4-16 @ 150	4-16 @ 150	FLOOR BEAM

SCHEDULE OF SLAB

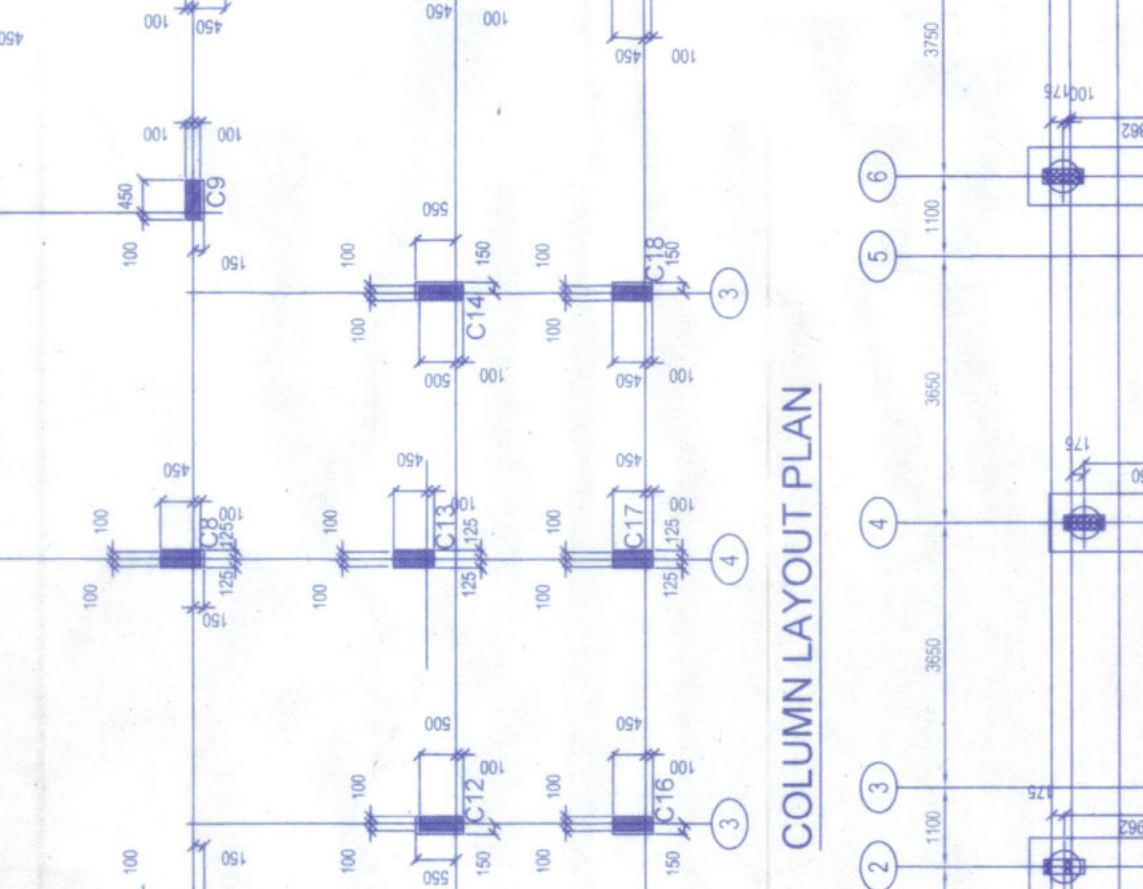
SLAB NO.	THK (mm)	REIN. AT SUPPORT	REIN. AT SPAN	REIN. ALONG LONG SPAN	REMARKS
S1	125	4-8 @ 150	4-8 @ 150	4-8 @ 150	FLOOR SLAB
S2	125	4-8 @ 150	4-8 @ 150	4-8 @ 150	FLOOR SLAB
S3	125	4-8 @ 150	4-8 @ 150	4-8 @ 150	FLOOR SLAB



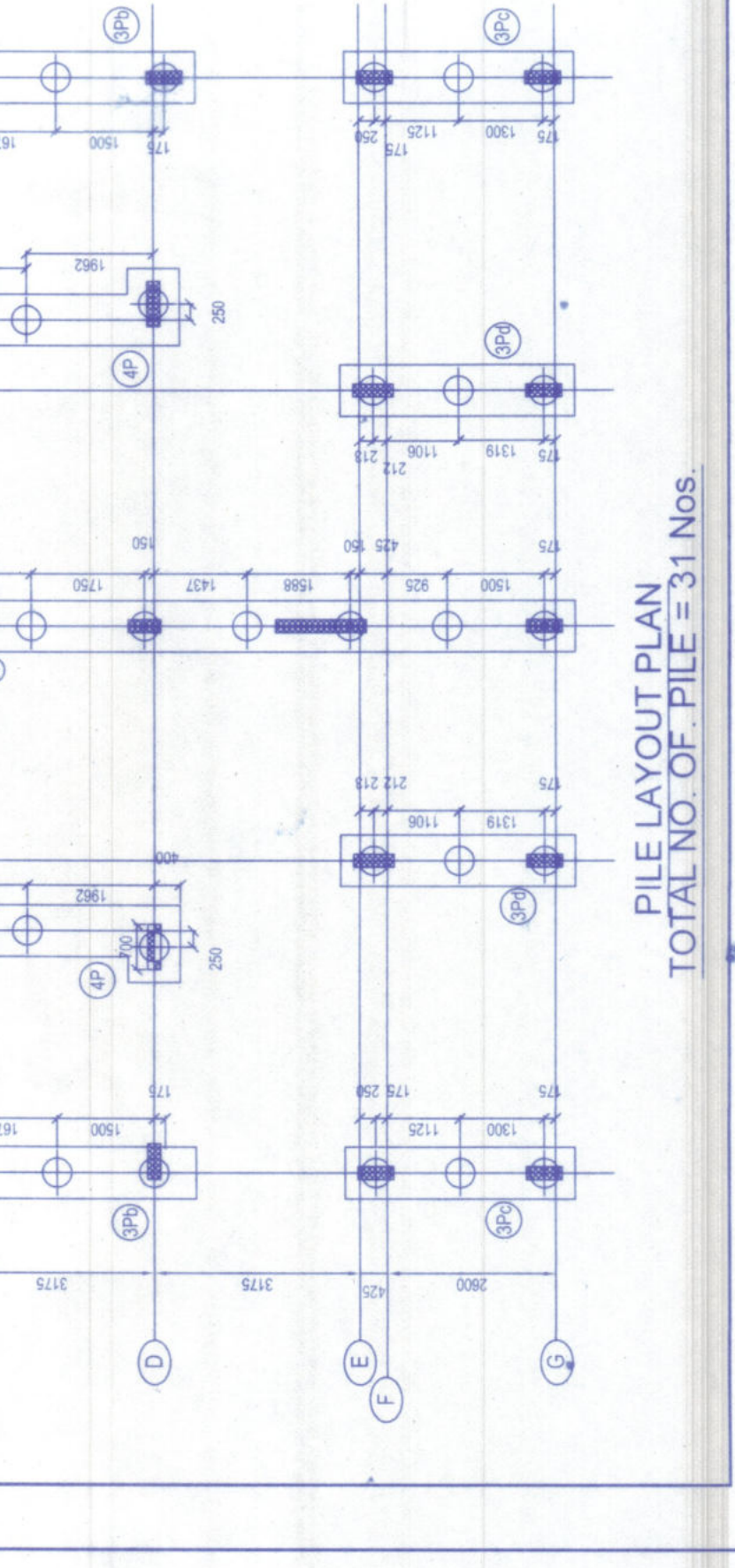
BEAM SLAB ARRANGEMENT PLAN AT 1ST FLOOR LEVEL



TYPICAL DETAIL OF SLAB REIN.



COLUMN LAYOUT PLAN



PILE LAYOUT PLAN
TOTAL NO. OF PILE = 31 Nos.